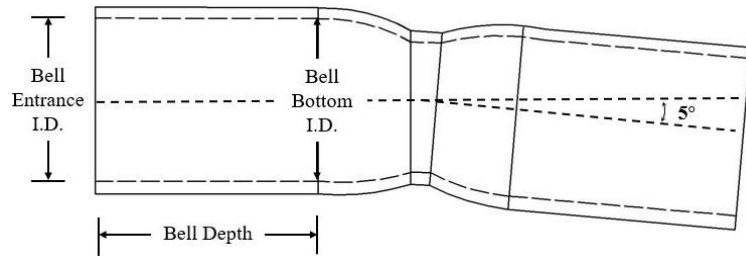
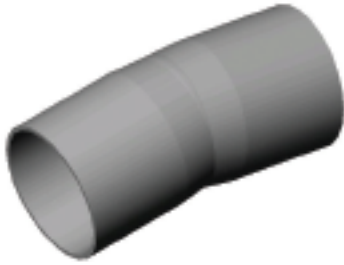


# Five-Degree Bell x Bell Couplings

PVC Electrical Conduit Fittings and Accessories



Trade Size (in)	SCH40*		DB120**		Bell Entrance I.D.	Bell Bottom I.D.	Bell Depth	Approx. Overall Length
	Catalog Part Number	System Part Number	Catalog Part Number	System Part Number				
1½	--	--	605EC15BB	924518	1.918	1.894	2.25	5.75
2	405EC20BB	802731	605EC20BB	924519	2.393	2.369	2.25	5.75
2½	405EC25BB	802732	--	--	2.890	2.868	3.50	8.25
3	405EC30BB	802733	605EC30BB	924521	3.515	3.492	3.75	8.75
4	405EC40BB	802735	605EC40BB	924523	4.515	4.491	4.00	9.25
5	405EC50BB	802736	605EC50BB	924525	5.593	5.553	4.50	10.25
6	405EC60BB	802737	605EC60BB	924527	6.658	6.614	5.25	11.75
8	405EC80BB	904704	--	--	8.670	8.610	5.25	11.75

- Approximate overall length is prior to bend
- Dimensions are nominal (inches) and are subject to normal manufacturing tolerances
- \*SCH40 and SCH80 bell dimensions per NEMA TC-2 and TC-3
- \*\*DB Bell dimensions per NEMA TC-2 and ASTM F512