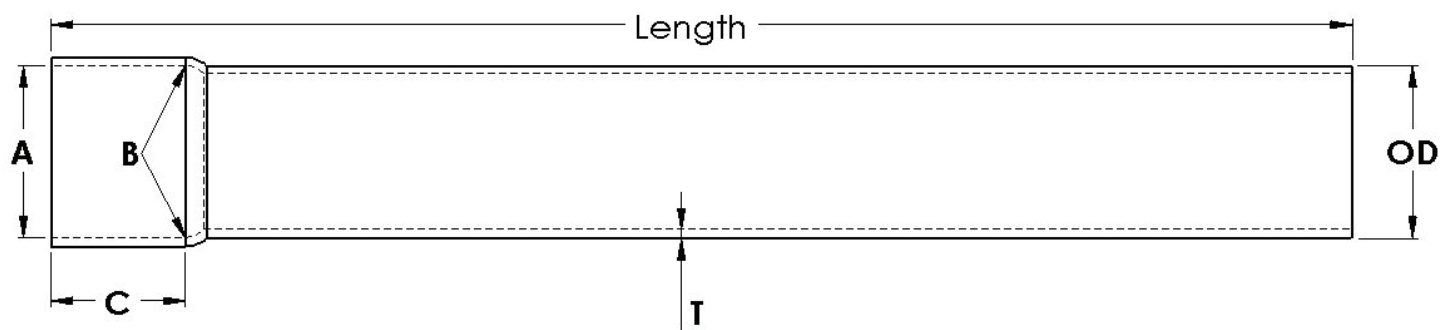


Schedule 80 Cellular Core Rigid PVC Conduit

Cor-Tek™

Conforms to UL 651 and NEMA TC 2

- Rated for use with 90 degree C wiring
- Sunlight resistant per UL 651



| Trade Size | Part Number | | Dimensions (in) | | | Bell Dimensions (in) | | | Approximate Weight per 100' (lbs) | Crate Quantity (ft) | |
|----------------------|-------------|------------|-----------------|------------|--------------------|----------------------|-------|------|-----------------------------------|---------------------|---------|
| | 10-foot | 20-foot | Avg OD | Min Avg ID | Min Wall Thickness | A | B | C | | 10-foot | 20-foot |
| Cellular Core | | | | | | | | | | | |
| 3 | 8030010COR | 8030020COR | 3.500 | 2.820 | 0.300 | 3.515 | 3.492 | 4.00 | 165 | 880 | 1,760 |
| 4 | 8040010COR | 8040020COR | 4.500 | 3.737 | 0.337 | 4.515 | 4.491 | 5.00 | 236 | 570 | 1,140 |
| 5 | 8050010COR | 8050020COR | 5.563 | 4.713 | 0.375 | 5.593 | 5.553 | 5.75 | 299 | 380 | 760 |
| 6 | 8060010COR | 8060020COR | 6.625 | 5.646 | 0.432 | 6.658 | 6.614 | 6.50 | 448 | 260 | 520 |

Standard UL 651 and NEMA TC-3 conduit fittings are used with both Solid Wall and Cellular Core conduit