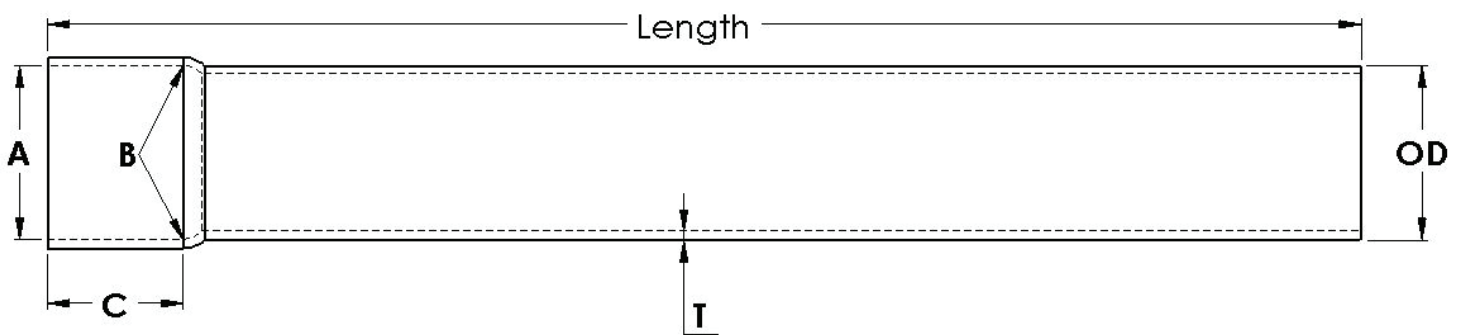


Schedule 40 Cellular Core Rigid PVC Conduit

Cor-Tek™

Conforms to UL 651 and NEMA TC 2

- Rated for use with 90 degree C wiring
- Sunlight resistant per UL 651



Trade Size	Part Number		Dimensions (in)			Bell Dimensions (in)			Approximate Weight per 100' (lbs)	Crate Quantity (ft)	
	10-foot	20-foot	Avg OD	Min Avg ID	Min Wall Thickness	A	B	C		10-foot	20-foot
Cellular Core											
3	4030010COR	4030020COR	3.500	3.008	0.216	3.515	3.492	4.00	124	880	1,760
3½	4035010COR	4035020COR	4.000	3.486	0.226	4.015	3.992	4.00	153	630	1,260
4	4040010COR	4040020COR	4.500	3.961	0.237	4.515	4.491	5.00	167	570	1,140
5	4050010COR	4050020COR	5.563	4.975	0.258	5.593	5.553	5.75	231	380	760
6	4060010COR	4060020COR	6.625	5.986	0.280	6.658	6.614	6.50	316	260	520

Standard UL 651 and NEMA TC-3 conduit fittings are used with both Solid Wall and Cellular Core conduit