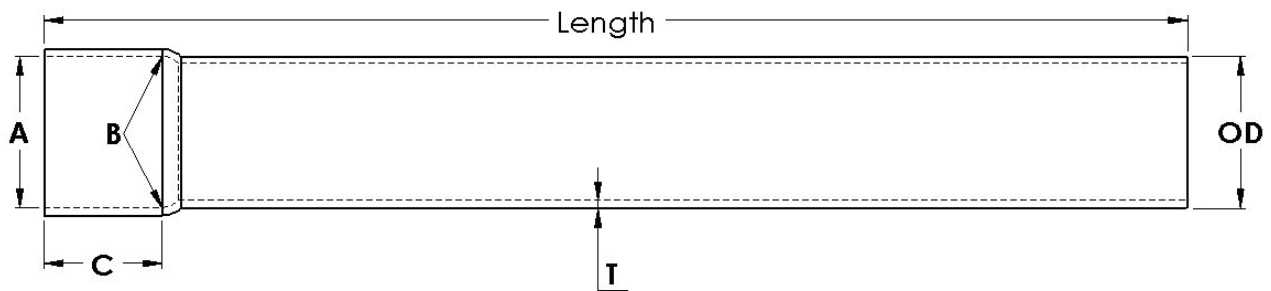


DB-120 Utility Duct

Cor-Tek™

Conforms to NEMA TC 6 & 8 and ASTM F 512

- DB is utilized in direct or encased burial applications
- Standard overall pipe length is 20 feet



Trade Size	Part Number	Dimensions (in)		Bell Dimensions (in)			Approximate Weight per 100' (lbs)	Crate Quantity (ft)
		Avg OD	Min Wall Thickness	A	B	C		
Solid Wall								
1	1210020	1.315	0.060	1.330	1.310	2.25	16	7,200
1½	1215020	1.900	0.060	1.918	1.894	2.75	26	4,500
2	1220020	2.375	0.077	2.393	2.369	4.00	42	2,800
3	1230020	3.500	0.118	3.515	3.492	4.00	97	1,760
4	1240020	4.500	0.154	4.515	4.491	5.00	160	1,140
5	1250020	5.563	0.191	5.593	5.553	5.75	244	760
6	1260020	6.625	0.227	6.658	6.614	6.50	345	520